



## Bathing establishment fact sheet

Name of bathing establishment	DALMAZIA
Address	Via Arenile, 18
City	Forte dei Marmi (Lu)
Contacts	Tel. +39 0584 784145 – +39 3349919964 – <a href="mailto:dalmazia@principefortedeimarmi.com">dalmazia@principefortedeimarmi.com</a>
Website	<a href="https://www.bagnodalmazia.com/">https://www.bagnodalmazia.com/</a>

**TESTED BY:** [Handy Superabile Social Promotion Association](#) in summer 2023

**Please note** The following information refers to the verification date shown at the bottom of each sheet. The Association is not responsible for any significant changes made to the property after the visit.

### Summary

Bathing establishment fact sheet .....	1
Arrival at the facility .....	2
Private/public parking .....	2
Pathway from the parking lot to the main entrance .....	2
Reception welcome .....	3
Bar/restaurant .....	4
Internal pathways and common services .....	5
Internal pathways .....	5
Toilet and shower accessible to guests with reduced mobility .....	5
Changing room .....	7
Beach .....	8
Children's play area .....	10
Pool .....	11
Medical practices/health facilities .....	11

Project carried out with the contribution of





**Arrival at the facility**

**Private/public parking**


Presence of private parking	YES
Fund type of private parking	gravel
Presence of parking space reserved for people with disabilities	NO
Public parking nearby	YES
Fund type of public car park	asphalt
	

**Pathway from the parking lot to the main entrance**

Pathway from the parking lot to the entrance	flat on a gravel surface for approximately 10 meters which can make movement difficult for people in wheelchairs but 1 meter coconut mats are available to facilitate movement in wheelchairs
There are indicators and tactile maps	NO





Useful width of door/entrance passage	greater than 90 cm
	

### Reception welcome

Umbrella booking system	<input type="checkbox"/> Via web <input checked="" type="checkbox"/> By telephone <input checked="" type="checkbox"/> On site
Presence of multilingual staff	not detected
Presence of plant plan with legend of services available	NO
Presence of visuo-tactile map	NO
Noticeboard/information panel sat an average height of 130 cm in a well-lit area and a character size of at least 14 dpi with a contrast ratio greater than 4.5:1	NO
The staff has undergone training on welcoming people with various disabilities	NO

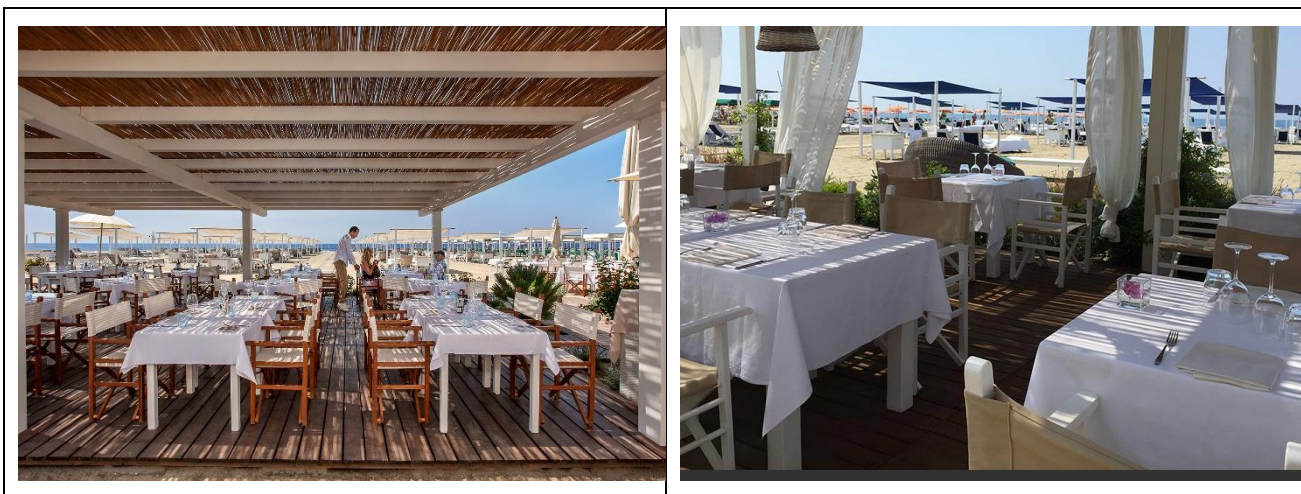




**Bar/restaurant**

Type of venue	Bar/restaurant
Access to the venue	flat
Useful width of door/entrance passage	greater than 90 cm
Bar counter	greater than 100 cm
Type of tables	with 4 legged
Space under the floor tables	65cm
Multilingual menu	YES
Menu with large print characters	NO
Braille menu	NO
Table service for people with disabilities	YES
Availability of food for celiacs	<input type="checkbox"/> bread <input type="checkbox"/> pasta <input type="checkbox"/> biscuits <input type="checkbox"/> ice cream <input type="checkbox"/> pre-packaged foods





### Internal pathways and common services

#### Internal pathways

Indicate whether the pathways connecting the entrance to the beach are flat or with ramps in addition to those already described	obstacle-free routes
--	----------------------

#### Toilet and shower accessible to guests with reduced mobility

Number of toilets accessible/usable by guests with reduced mobility	2
Access to the first room	flat
Useful width of entrance door	90cm
Toilet height	50cm
Open front toilet seat	YES
Support handles	on both sides







Flexible shower next to the toilet	NO
Free space on the sides of the toilet	to the left greater than 90 cm To the right 25cm Front greater than 90 cm
Electric bell/telephone	YES
Washbasin with space underneath for a wheelchair	68cm
Height from the ground to the lower edge of the mirror	sufficient for use by a person in a wheelchair
Baby changing table	not detected
	
	







Shower accessible to guests with reduced mobility available	YES separated from the toilet room with 4 external shower cubicles 120 cm wide and 126 cm deep
Access to the shower room if separated from the toilet room	with a small step of 2 cm
Useful width of entrance door/gap if separated from the toilet room	88cm
Shower type	open type
Floor-level shower	YES
Shower chair	missing
Support handle	missing
Presence of shower head or latch	fixed shower head with handle at 110 cm and flexible shower head at 74 cm in height
Electric bell/telephone	Choose an item.
	

### Changing room

Changing room accessible to guests with reduced mobility available	YES
Access to the venue	with short ramp 66 cm long, 90 cm wide
Useful width of door/entrance passage	90cm





Dimensions of the changing room	sufficient for guest maneuvering in a wheelchair
Presence of cot	NO
Coat stand height from the floor	greater than 140 cm and not accessible to people in wheelchairs
	

## Beach

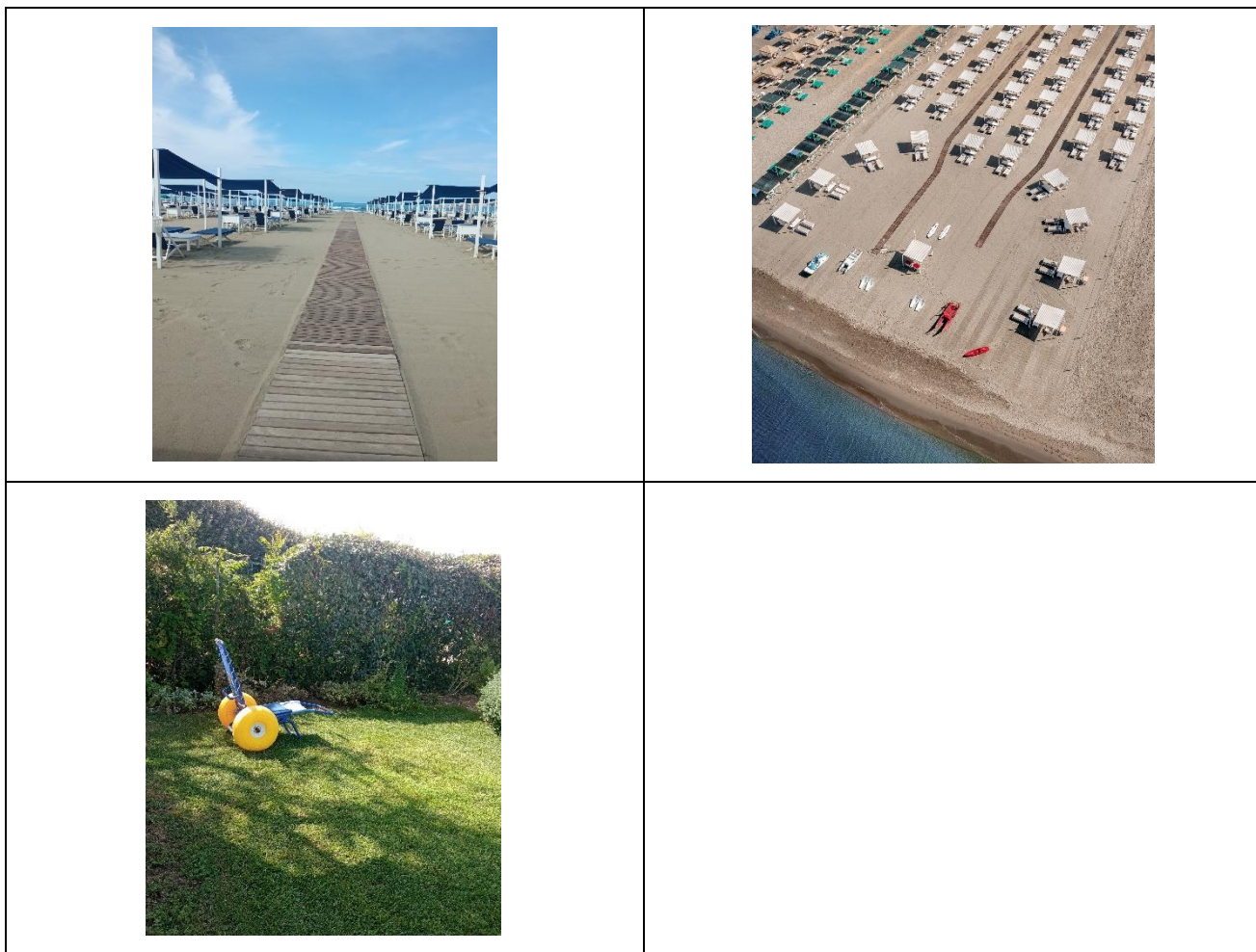
Type of beach	sand
Access to the beach	flat
Walkway to reach the umbrellas	YES with coconut matting extension to reach the shoreline
Type of walkway	wood
Walkway width	100 cm





	
<p>Removable Platform between the walkway and the umbrella station to facilitate the passage and parking wheelchair</p>	<p>YES</p>
<p>Amphibious beach chair available for helping people with reduced mobility to enjoy swimming (owned by the establishment or by association)</p>	<p>YES</p>
	





**Children's play area**

Children's play area	not detected
There are games for children with reduced mobility	NO





### Pool

The property has a swimming pool	NO
----------------------------------	----

### Medical practices/health facilities

Hospitals near the facility	<b>Versilia Hospital SS 1, 335, 55049 Camaiole LU Telephone: 0584 6051</b>
Other healthcare facilities	<b>ASL Health District No. 12</b> Viareggio Via Sant'Elme, 30 Tel. 058483873 <b>Green Cross</b> Viale Italice, corner. via Risorgimento Tel. 058484013 Free first aid for white codes <b>Night medical guard</b> Tel. 0584 83896 (8pm-8am) <b>Mercy</b> Via PI da Carrara, 32 Tel. 0584752133/0584 752149 <b>Medical service "San Camillo" nursing home</b> Via PI da Carrara, 37 Tel. 0584 7391 <b>Dialysis service</b> Croce Verde Viale Italice, corner. via Risorgimento Tel.058484013 affiliated with AUSL

TESTED BY: Handy Superabile - Social Promotion Association - in summer 2023

